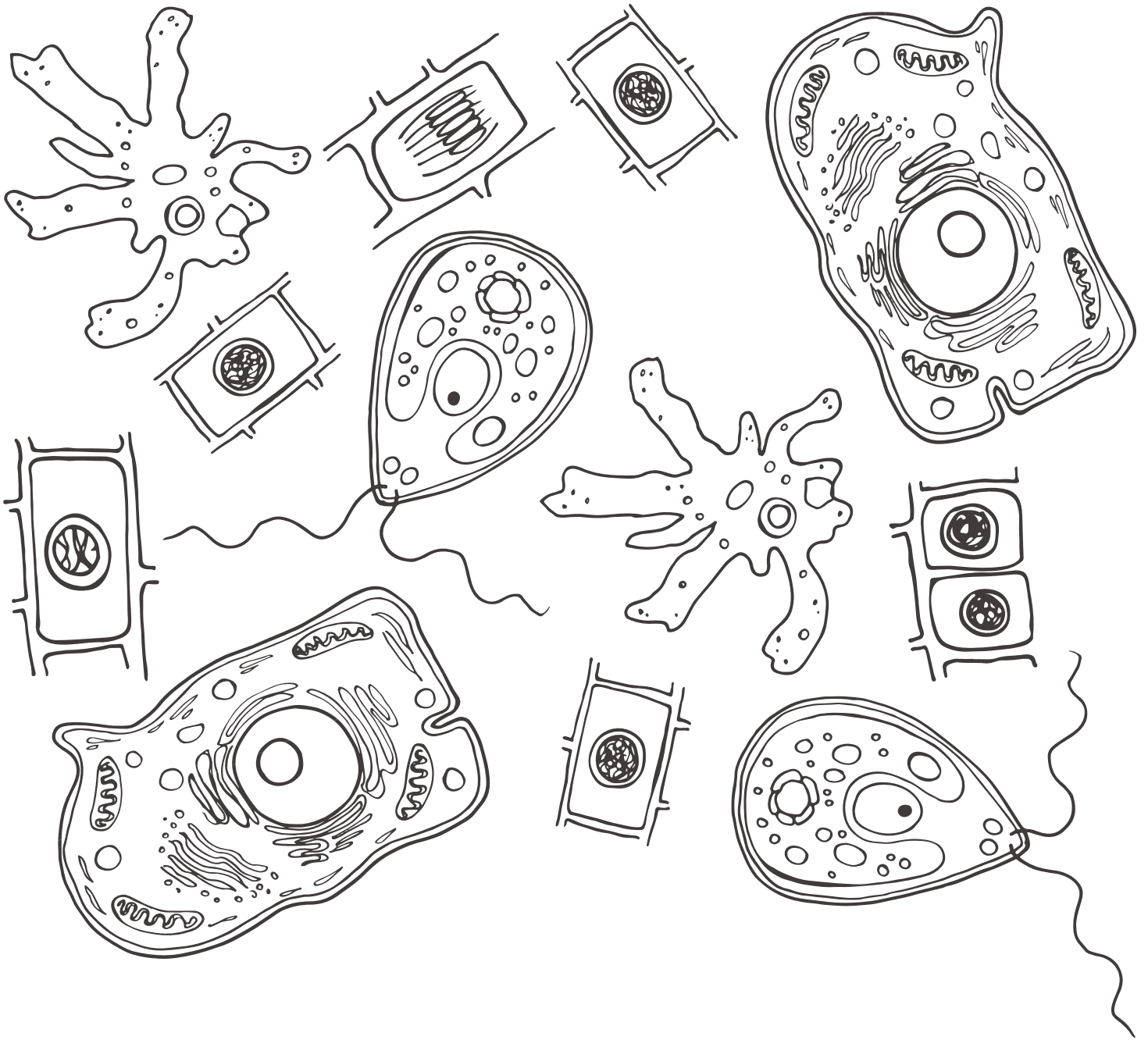


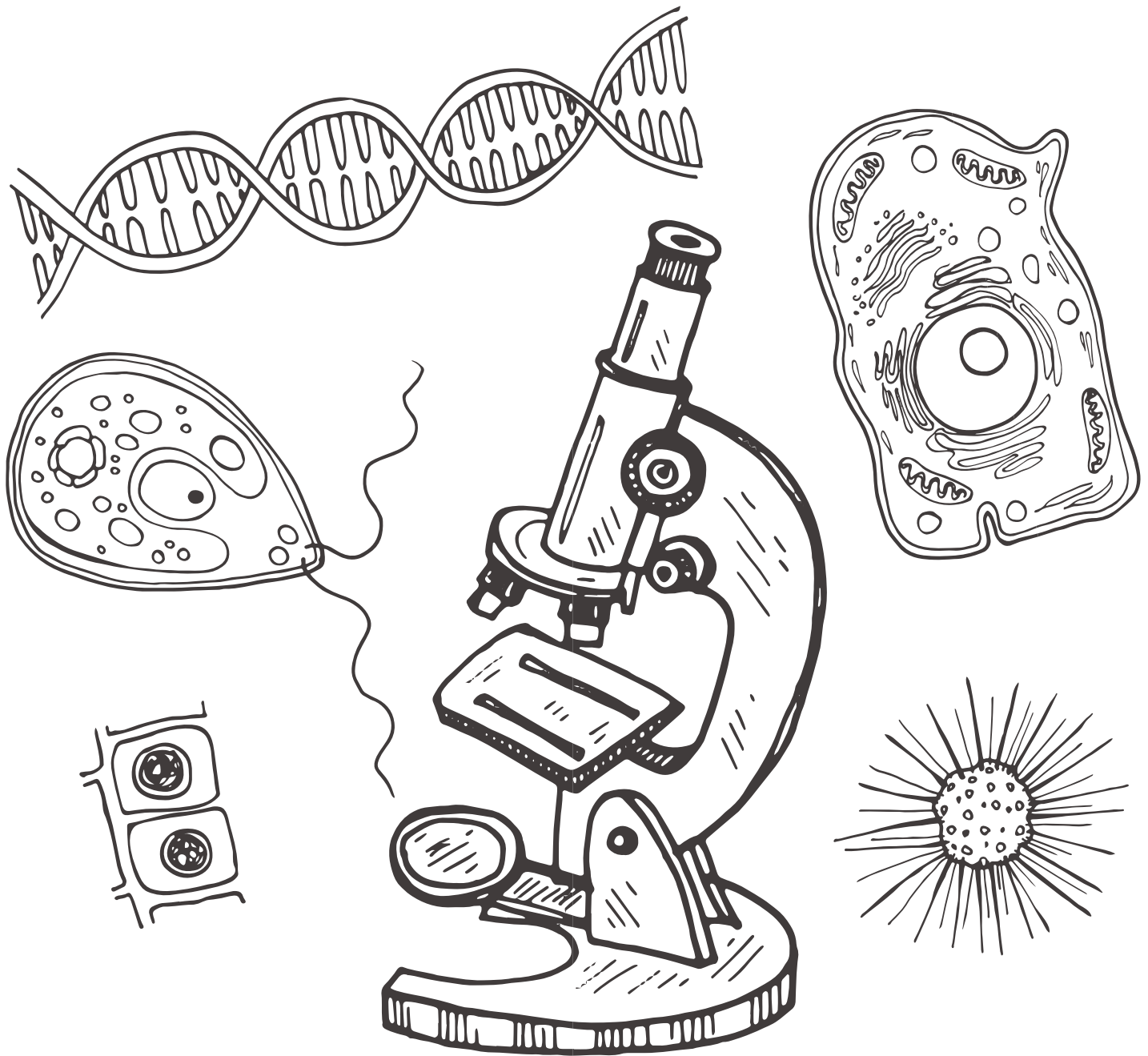
The **thyroid** is a butterfly-shaped organ in your neck. It makes special chemicals called hormones. These hormones control how fast the body uses up energy and they help you grow.



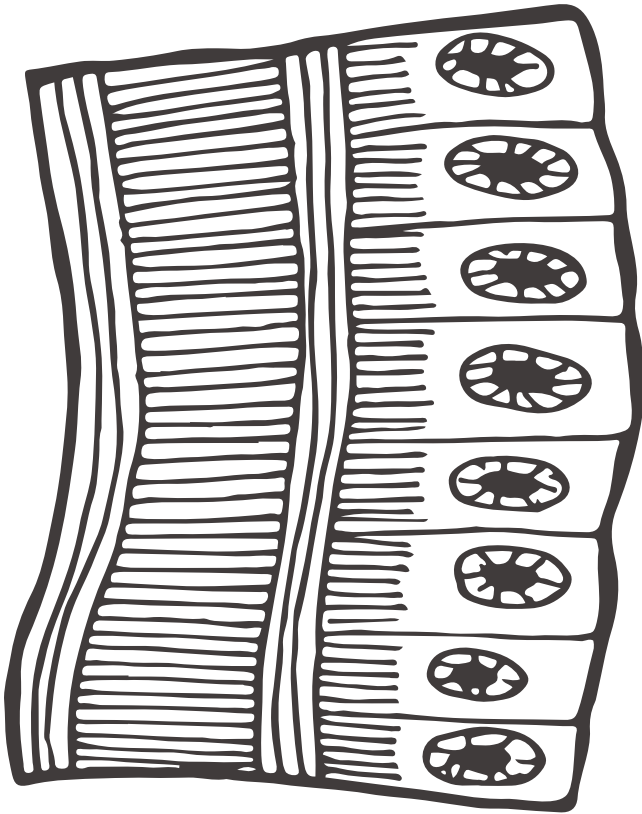
A **care team** is the group of doctors and other people who work together to care for a person with cancer.



The cell is the basic building block of life. Cells are so tiny that you can only see them under a microscope. They come in all sorts of shapes.



A microscope can let you see things that are just too small to see with only your eyes. They magnify things like cells, viruses and DNA.



Tissue is a grouping of cells that have the same function in the body. For example, skin and muscle are types of tissue.