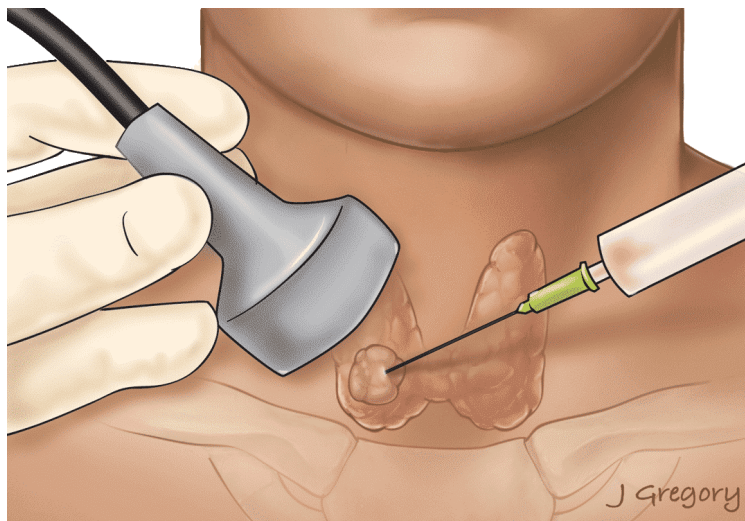




Thyroid Biopsy

When a lump is discovered on a patient's neck, a doctor might perform a thyroid biopsy to confirm diagnosis of thyroid nodules or predict the risk of cancer. Sometimes, thyroid patients will also have biopsies of parts of their neck outside of the thyroid to determine the spread of disease.



Fine-Needle Aspiration Biopsy (FNA)

- A doctor places a fine needle in the thyroid gland and draws cells out through a syringe.
- A pathologist then analyzes these cells under a microscope.
- Multiple samples might be necessary for proper analysis.
- This procedure is typically conducted with the help of ultrasound guidance.



Please note that this information is intended for educational purposes. It does not replace consultation with your doctor, and it should not be interpreted as medical advice. We encourage you to speak to your health care provider if you have further questions or concerns regarding your medical care.

For more information scan this code or visit:

<https://thancguide.org/cancer-basics/diagnosis/biopsy/thyroid/>

Core-Needle Biopsy

- This method utilizes a larger needle to extract a core of tissue from the nodule. Removing more cells may provide more conclusive results than an FNA.

What To Expect

- Generally, no preparation is necessary for this procedure.
 - Your doctor may instruct you to stop taking certain medications, such as blood thinners, before your biopsy.
- This procedure is performed in your doctor's office and is minimally invasive.
- You may experience mild soreness or swelling following your biopsy.

After The Procedure

- Do not exercise or move heavy objects for the day.
- Take pain medication (e.g. advil, tylenol) if you are in pain or discomfort.
- You may shower and bathe as normal.



Please note that this information is intended for educational purposes. It does not replace consultation with your doctor, and it should not be interpreted as medical advice. We encourage you to speak to your health care provider if you have further questions or concerns regarding your medical care.

For more information scan this code or visit:

<https://thancquide.org/cancer-basics/diagnosis/biopsy/thyroid/>